

LIFE AFTER GRAD SCHOOL

Which path is right for me?

Pros

- Continue your own research
- More flexible work hours
- More flexibility in research topics
- Mentoring opportunities are larger
- Post tenure job security
- School to school benefits can be good or ok
- Tuition waiver for kids
- Can have better healthcare especially when associated with a cutting edge hospital on campus
- Maternity leave is usually pretty good
- Still get to publish
- Free reign in conferences (can be fun locations)

Academia



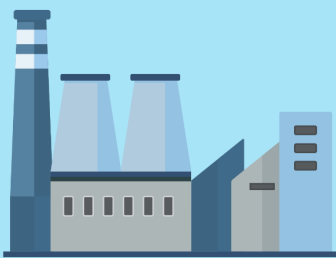
Cons

- Few positions
- Fight for funding
- More work to get funding
- Fighting for tenure/ waiting for tenure positions to open
- Can be long hours
- Balancing teaching/administration/research obligations
- Not great at dealing with interpersonal issues
- If you get bored of research area it could be harder to get funding on new directions

Academia



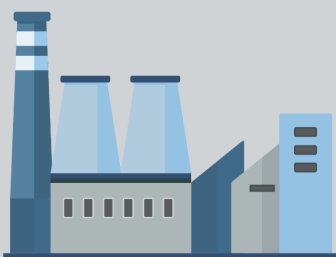
Industry



Pros

- Money!
- Hours are more consistent
- Benefits can be substantial
- Lots of companies
- Set amounts of time off and earned PTO
- HR department to govern interpersonal issues
- Interacting with multiple people and groups to work together
- Established infrastructure
- Onboarding and training better
- Repairs and service contracts are much more common
- Ordering is easier
- Glassware cleaning, buffers etc may have departments to do it for you
- No fighting for funding
- Recruitment programs give you more flexibility
- Can change research directions with new projects

Industry



Cons

- Less job security
- Less direct impact
- Could have night shifts or bad hours
- Company to company atmosphere can change largely
- Little to no publishing
- Limited in conferences
- Legal issues for talks
- Security clearances

LIFE AFTER GRAD SCHOOL

Which path is right for me?

Pros

- Job security (like tenure)
- Pensions
- Funding
- Great benefits
- More holidays
- In some locations demand can be high
- Can have travel opportunities

Cons

- Less publishing and more red tape
- Limited in conferences
- Legal issues for talks
- Security clearances
- More severe consequences to messing up
- Private behavior can be limited
- Hiring process can be slow

Government



Patent Law



Pros

- Money!
- Good job security
- No more wet bench
- No writing grants
- Quick turnover for subject matters

Cons

- Have to pass bar
- Expensive test
- Long hours

Pros

- Still get to read science without having to do wet bench work
- (look at government for some overlapping pros and cons)
- Can have travel opportunities (can be semi-long term stints)

Cons

- Need great communication skills

Science policy/ Science writing



Consulting



Pros

- Can pay highly
- Can be done on the side of other jobs as a freelancer
- Can have travel opportunities

Cons

- No control on being hired
- Lots of footwork to find customers
- Can be stressful
- Low to no benefits
- Need to do your own tax math
- Insurance needs to be bought on your own
- Need great communication skills